

**TABLE 4D1A - Single-core 70 DC thermoplastic insulated cables, non-armoured,  
with or without sheath  
(COPPER CONDUCTORS)**

Ambient temperature: 30 QC  
Conductor operating temperature: 70 DC

CURRENT-CARRYING CAPACITY (amperes):

Conductor cross- sectional area	Reference Method A (enclosed in conduit in thermally insulating wall etc.)		Reference Method B (enclosed in conduit on a wall or in trunking etc.)		Reference Method C (clipped direct)		Reference Method F (in free air or on a perforated cable tray horizontal or vertical)				
	2 cables, single- phase a.c. or d.c.		2 cables, single- phase a.e. or d.c.		2 cables, single- phase a.c. or d.e. flat and touching		Touching			Spaced by one diameter	
							2 cables, single- phase a.c. or d.c. flat	3 cables, three- phase a.c. flat	3 cables, three- phase a.c. trefoil	2 cables, single-phase a.e. or d.c. or 3 cables three-phase a.c. flat	
										Horizontal	Vertical
1	2	3	4	5	6	7	8	9	10	11	12
( mm2)	(A)	(A)	(A)	(A)	(A)	(A)	(A)	(A)	(A)	(A)	(A)
1	11	10.5	13.5	12	15.5	14	-	-	-	-	-
1.5	14.5	13.5	17.5	15.5	20	18	-	-	-	-	-
2.5	20	18	24	21	27	25					
4	26	24	32	28	37	33					
6	34	31	41	36	47	43					
10	46	42	57	50	65	59					
16	61	56	76	68	87	79					
25	80	73	101	89	114	104	131	114	110	146	130
35	99	89	125	110	141	129	162	143	137	181	162
50	119	108	151	134	182	167	196	174	167	219	197
70	151	136	192	171	234	214	251	225	216	281	254
95	182	164	232	207	284	261	304	275	264	341	311
120	210	188	269	239	330	303	352	321	308	396	362
150	240	216	300	262	381	349	406	372	356	456	419
185	273	245	341	296	436	400	463	427	409	521	480
240	321	286	400	346	515	472	546	507	485	615	569
300	367	328	458	394	594	545	629	587	561	709	659

COPPER  
CONDUCTORS

Conductor operating temperature: 70 QC

VOLTAGE DROP (per ampere per metre):

Conductor cross-sectional area  I	2 cables + 2	2 cables, single-phase a.c.									3 or 4 cables, three-phase a.c.											
		Reference Methods A & B (enclosed in conduit or trunking)			Reference Methods C & F (clipped direct, on tray or in free air)						Reference Methods A & B (enclosed in conduit or trunking)			Reference Methods C & F (clipped direct, on tray or in free air),								
					Cables touching			Cables spaced*						Cables touching, Trefoil			Cables touching, Flat			Cables spaced*, Flat		
1	2	3			4			5			6			7			8			9		
(mm2)	(mY/ A/m)	(mY/A/m)			(m Y / A/m)			(mY/A/m)			(mY/A/m)			(mY/Aim)			(mY/A/m)			(mY/Aim)		
I	44	44			44			44			38			38			38			38		
1.5	29	29			29			29			25			25			25			25		
2.5	18	18			18			Ig			15			15			15			15		
4	11	11			11			11			9.5			9.5			9.5			9.5		
6	7.3	7.3			7.3			7.3			6A			6A			6A			6A		
10	4A	4A			4A			4A			3.8			3.8			3.8			3.8		
16	2.8	2.8			2.8			2.8			2A			2A			2A			2A		
		x z			x z			x z			x z			x z			x z			x z		
25	1.75	1.80	0.33	1.80	1.75	0.20	1.75	1.75	0.29	1.80	1.50	0.29	1.55	1.50	0.175	1.50	1.50	0.25	1.55	1.50	0.32	1.55
35	1.25	1.30	0.31	1.30	1.25	0.195	1.25	1.25	0.28	1.30	1.10	0.27	1.10	1.10	0.170	1.10	1.10	0.24	1.10	J, IO	0.32	1.15
50	0.93	0.95	0.30	1.00	0.93	0.190	0.95	0.93	0.28	0.97	0.81	0.26	0.85	0.80	0.165	0.82	0.80	0.24	0.84	0.80	0.32	0.86
70	0.63	0.65	0.29	0.72	0.63	0.185	0.66	0.63	0.27	0.69	0.56	0.25	0.61	0.55	0.160	0.57	0.55	0.24	0.60	0.55	0.31	0.63
95	0.46	0.49	0.28	0.56	0A7	0.180	0.50	0A7	0.27	0.54	0A2	0.24	0.48	0.41	0.155	0.43	0AI	0.23	0.47	0.40	0.31	0.51
120	0.36	0.39	0.27	0A7	0.37	0.175	0AI	0.37	0.26	0A5	0.33	0.23	0.41	0.32	0.150	0.36	0.32	0.23	0.40	0.32	0.30	0A4
150	0.29	0.31	0.27	0AI	0.30	0.175	0.34	0.29	0.26	0.39	0.27	0.23	0.36	0.26	0.150	0.30	0.26	0.23	0.34	0.26	0.30	0AO
185	0.23	0.25	0.27	0.37	0.24	0.170	0.29	0.24	0.26	0.35	0.22	0.23	0.32	0.21	0.145	0.26	0.21	0.22	0.31	0.21	0.30	0.36
240	0.180	• 195	0.26	0.33	0.185	0.165	0.25	0.185	0.25	0.31	0.17	0.23	0.29	0.160	0.145	0.22	0.160	0.22	0.27	0.160	0.29	0.34
300	0.145	0.160	0.26	0.31	0.150	0.165	0.22	0.150	0.25	0.29	0.14	0.23	0.27	0.130	0.140	0.190	0.130	0.22	0.25	0.130	0.29	0.32
400	0.105	0.130	0.26	0.29	0.120	0.160	0.20	0.115	0.25	0.27	0.12	0.22	0.25	0.105	0.140	0.175	0.105	0.21	0.24	0.100	0.29	0.31
500	0.086	0.110	0.26	0.28	0.098	0.155	0.185	0.093	0.24	0.26	0.10	0.22	0.25	0.086	0.135	0.160	0.086	0.21	0.23	0.081	0.29	0.30
630	0.068	0.094	0.25	0.27	0.081	0.155	0.175	0.076	0.24	0.25	0.08	0.22	0.24	0.072	0.135	0.150	0.072	0.21	0.22	0.066	0.28	0.29
800	0.053	-	-	-	0.068	0.150	0.165	0.061	0.24	0.25	-	-	-	0.060	0.130	0.145	0.060	0.21	0.22	0.053	0.28	0.29
1000	0.042	-	-	-	0.059	0.150	0.160	0.050	0.24	0.24	-	-	-	0.052	0.130	0.140	0.052	0.20	0.21	0.044	0.28	0.28

**TABLE 4D2A - Multicore 70°C thermoplastic insulated and thermoplastic sheathed cables, non-armoured**

**(COPPER CONDUCTORS)**

CURRENT-CARRYING CAPACITY (amperes): Ambient temperature: 30 QC  
Conductor operating temperature: 70 QC

Conductor sectional area	Reference Method A (enclosed in conduit in thermally insulating wall etc.)		Reference Method B (enclosed in conduit on a wall or in trunking etc.)		Reference Method C (clipped direct)		Reference Method E (in free air or on a perforated cable tray etc. horizontal or vertical)	
	I two- core cable", single-phase a.c. or d.c.	I three-core cable* or I four-core cable, three- phase a.c.	I two- core cable", single-phase a.c. or d.c.	I three-core cable* or I four-core cable, three- phase a.c.	I two- core cable". single-phase a.c. or d.c.	I three-core cable* or I four-core cable, three- phase a.c.	I two- core cable*. single-phase a.c. or d.c.	I three-core cable* or I four-core cable, three- phase a.c.
I	2	3	4	5	6	7	8	9
(111m2)	(A)	(A)	(A)	(A)	(A)	(A)	(A)	(A)
I	11	10	13	11.5	15	13.5	17	14.5
1.5	14	13	16.5	15	19.5	17.5	22	18.5
2.5	18.5	17.5	23	20	27	24	30	25
4	25	23	30	27	36	32	40	34
6	32	29	38	34	46	41	51	43
10	43	39	52	46	63	57	70	60
16	57	52	69	62	85	76	94	80
25	75	68	90	80	112	100	119	101
35	92	83	111	99	138	119	148	126
50	110	99	133	118	168	144	180	153
70	139	125	168	149	213	184	232	196
95	167	150	201	179	258	223	282	238
120	192	172	232	206	299	259	328	276
150	219	198	255	225	344	299	379	319
185	248	223	285	255	392	341	434	364
240	291	261	344	297	461	403	514	430
300	334	298	394	339	530	464	593	497
400			470	402	634	557	715	597

TABLE 4D2B

VOLTAGE DROP (per ampere per metre):					Conductor operating temperature: 70°C		
Conductor cross-sectional area	Two-core cable, d.c.	Two-core cable, single-phase a.c.			Three- or four-core cable, three-phase a.c.		
	2	3			4		
(mm <sup>2</sup> )	(mV/A/m)	(mV/A/m)			(mV/A/m)		
1	44	44			38		
1.5	29	29			25		
2.5	18	18			15		
4	11	11			9.5		
6	7.3	7.3			6.4		
10	4.4	4.4			3.8		
16	2.8	2.8			2.4		
		r	x	z	r	x	z
25	1.75	1.75	0.170	1.75	1.50	0.145	1.50
35	1.25	1.25	0.165	1.25	1.10	0.145	1.10
50	0.93	0.93	0.165	0.94	0.80	0.140	0.81
70	0.63	0.63	0.160	0.65	0.55	0.140	0.57
95	0.46	0.47	0.155	0.50	0.41	0.135	0.43
120	0.36	0.38	0.155	0.41	0.33	0.135	0.35
150	0.29	0.30	0.155	0.34	0.26	0.130	0.29
185	0.23	0.25	0.150	0.29	0.21	0.130	0.25
240	0.180	0.190	0.150	0.24	0.165	0.130	0.21
300	0.145	0.155	0.145	0.21	0.135	0.130	0.185
400	0.105	0.115	0.145	0.185	0.100	0.125	0.160

## Appendix 3 Data Sheets and Mise

# 12V/24VKETTLES & COOKING EQUIPMENT

Just because you're on the road or on the water, it doesn't mean you can't brew a cup of tea, microwave a ready-to-eat meal, or even enjoy a toasted sandwich or some popcorn!

Be aware however that 12V or 24V appliances simply can't cook or heat as quickly as 230V models. A 12V kettle will take around 10-15 minutes to boil a mug of water but the time will vary greatly according to the power getting into the kettle. Whether the engine is running or not can make a big difference. For safety, never use any of these products in a moving vehicle.

### BIG RED KETTLE: 24V

This is the most powerful 24V DC kettle. This is the most powerful 12V DC kettle. These kettles will make up to 3 cups of available. Make sure your power socket and available. Make sure your power socket and hot water at a time. battery are up to the task! Two models are battery are up to the task!

available: for lighter & DIN sockets.

- Will boil 2 normal mugs of water in approx. 10 mins.

- Power consumption: approx. 12 Amps

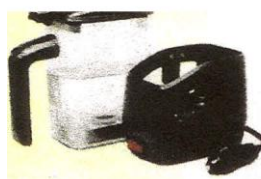


DIN C1210  
PLUG ~ I  
LIGHTER PLUG

### 12V "SMART" CAR POT

A 12V cordless kettle with a holder which can be mounted permanently if required.

- Spill resistant lid
- Capacity: 20 fluid oz (0.6L)
- Will boil 2 average mugs of water in approx. 15-20 minutes
- Power consumption: approx. 10 Amps



C1222  
£15.99

### 12V TOASTED SANDWICH MAKER 12V SAUCEPAN & POPCORN MAKER

Plug into a 12V socket and enjoy toasted sandwiches wherever you are with our very popular toasted sandwich maker.

- Non-stick heating plates
- Power-on indicator light
- 5' power cord
- Power consumption: approx. 4 Amps



C1412  
£14.99

### 12V SLOW COOKER

Just put in some meat and vegetables before you begin your journey, plug it in and, at the end of the day, dinner will be ready! It's an easy and convenient way to eat healthily.

- Plugs into most 12V lighter sockets
- 1 litre capacity
- Power draw: approx. 7A



C1417  
£27.99

### BIG BLUE KETTLE: 12V

- Supplied with lighter socket plug

- Will boil 2 normal mugs of water approx. 10 mins.

- Power consumption: approx. 20 Amps



C1208  
£24.99

### 12V/24V BEVERAGE HEATER SMALL RED / BLUE KETTLE: 12V + 24

This heater element simply plugs into any A powerful 24V kettle that will boil a cup of water in around 6 minutes. 12V lighter socket. Use it for making tea, coffee, soup or just for heating water.

- Will boil a normal mug of water in approx. 10-15 minutes
- Power consumption: approx. 10A (12V), 5A (24V)



12V C1207  
£4.99

24V C1211  
£4.99

### SUMMIT KETTLE: 12V + 24

- Plugs into most lighter-type sockets
- Will boil 2 normal mugs of water in approx. 15 minutes.
- Power consumption: approx. 14A (12V), 10A (24V)



12V C1205  
£14.99

24V C1206  
£14.99

It will plug into both lighter and DIN sockets and has a power consumption of approx. 10 Amps.

A 12V version is available and it's blue.



12V C1225  
£15.99

24V.

### 12V FRYING PAN

This aluminium frying pan can be used to cook eggs, bacon, tomatoes and so on. All you need is a 12V lighter socket.

- Plugs into most 12V lighter sockets
- Dimensions: approx. 6.5" diam. x 1.5" deep
- Power consumption: approx. 12.5A



C1416  
£17.99

### 12V PORTABLE STOVE

Our portable 12V stove can be used to heat most kinds of pre-cooked food. It's ideal for stews, sausage & beans, chops, rice meals and so on. It will heat a good-sized portion in approx. one hour.

Also available are 3-packs of aluminium trays designed for use with the stove.

- Power consumption: approx. 12 Amps



C1413

Trays.



## VARIOUS 12V/24V APPLIANCES

As with 12V kettles and other equipment, please don't expect the 12V products here to perform in the same way as 230V equipment. However, 12 volts is all you have, these items are the best of their kind that we've been able to find.

The electric blanket especially is very effective and can be used at night as an over blanket or at any time when additional warmth is needed. The vacuum cleaner with beater bar also has excellent performance. When plugging into a 12V socket, always ensure that the socket is capable providing sufficient power: this applies especially to the hair dryer, which draws up to 15 Amps. Also bear in mind that the performance of all of the products can be affected by voltage drop - see page 8 - so try to connect them as close to the vehicle's battery as possible.

### 12V/24V OSCILLATING FAN

This fan is a high performance model suitable for use in motorhomes, caravans, vans and boats.

- 4' of power lead with lighter socket plug
- Oscillating action can be turned on/off
- 7" in diameter
- Power consumption: approx. 18W (1.5A on 12V)



12V	24V
<b>C3213</b>	<b>C3214</b>
<b>£14.99</b>	<b>£14.99</b>

### 12V VARIABLE SPEED FAN

This powerful 12V 4" fan can be fitted in a heavy-duty, all-metal 12V fan. It doesn't vary of positions thanks to its heavy-oscillate but can be easily adjusted. duty spring clip.

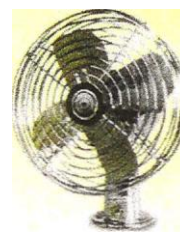


- Plugs into any 12V lighter socket
- Adjustable speed control
- Power consumption: approx. 12W (1A on 12V)

<b>C3209</b>
<b>£19.99</b>

### 12V HID METAL FAN

- 2-speed motor
- 6" diameter
- Ball joint allows fan to be adjusted
- Plugs into 12V lighter socket
- Power consumption: approx. 18W (1.5A on 12V)



<b>C3208</b>
<b>£16.99</b>

### 12V HEATER / FAN

This little heater will quickly defrost windows and provide instant warmth until a vehicle's engine warms up. It can be mounted and also has a folding handle.

- Plugs into any 12V lighter socket
- Adjustable base
- Power consumption: approx. 140W (12 A on 12V)



### 12V CANISTER WET/DRY VAC. CLEANER

A 12V cylinder vacuum cleaner which can be used to clean up wet spills as well as dry.

- 5L capacity
- Power consumption: approx. 10 Amps
- 3 re-useable cloth filters included
- 3 tools included.



<b>C3310</b>
<b>£9.99</b>

### 12V VAC. CLEANER

This 12V vacuum is so compact that it can be kept in a car ready for instant use. The power cord is stored in the back of the unit and the crevice tool clips to its underside.

- Plugs into any 12V lighter socket
- Power consumption: approx. 42W (3.5 A on 12V)
- Crevice & carpet cleaning tools included



<b>C3307</b>
<b>£9.99</b>

### 12V VAC. CLEANER WITH BEATER BRUSH 24V TWIN-MOTOR VACUUM CLEANER

This 12V vacuum cleaner has a rotating "beater bar", giving it great performance.

- 4M power cord plugs into any 12V lighter socket
- 4 tools included inc. extending hose
- Heavy duty reusable dustbag



- Power consumption: approx. 160W (13 A on 12V)

<b>C3308</b>
<b>£19.99</b>

For trucks and other 24V vehicles, this is a powerful vacuum cleaner which will suck up grit as well as general fluff, dust and rubbish.

- Operating voltage: 24V
- Power consumption: Approx. 72 watts
- Various tools supplied
- Power cord 6'



<b>C3311</b>
<b>£29.99</b>

### 12V HAIR DRYER

Although not as efficient as a 230V hair dryer, this 12V model is great in situations where mains power is unavailable.

- Plugs into most 12V lighter-type sockets
- Folding handle for easy storage
- Rotating head to direct airflow
- 8' (2.5M) power cord
- Power consumption: approx. 180 watts (15 Amps on 12V)



<b>C3413</b>
<b>£10.99</b>

Not only does this unit help to reduce airborne irritants and pollutants such as tobacco smoke and food odours, it also releases pleasant, soothing fragrances helping to improve driver alertness and concentration.

Self adhesive strips are supplied for installation as well as fragrance crystals. Refills are available separately.

- Plugs into any 12V lighter-type socket
- Power consumption: approx. 3W
- Virtually silent operation



<b>C3415</b>
<b>£12.99</b>

<b>C3415a</b>
<b>£0.89</b>

### 12V MASSAGING SEAT CUSHION

With variable heating and massage functions, this will fit securely to most vehicle seats. It plugs into any 12V lighter socket and makes any journey more comfortable. Breathable fabric stays cool in summer while a built-in heater keeps you warm in winter.

A hand control gives easy adjustment of all functions.

- Operating voltage: 12V
- Power consumption: App. 24W (2A on 12V)



### 12V HEATED BLANKET

This 12V heated blanket is a great way to keep your legs warm on cold days. It's made from a cotton/polyester blend and is dark blue in colour.

- Built-in thermostat ensures safety
- Approx. 58" x 40" (145cm x 100cm)
- 8' power cord
- Power consumption: approx. 48W (4A on 12V)



<b>C3417</b>
<b>£24.99</b>

Pack of fragrance crystals (C3415a) choose from a) Jasrune, b) Pine, c) Strawberry, d) Ylang Ylang



## INOEL B RANGE OF 12V/24V "CRUISE" FRIDGES

Indel B's "CRUISE" range of compressor-powered 12V/24V fridges is designed for use on boats and in buses, motorhomes, and other specialised vehicles. Fitted as original equipment to many boats, CRUISE models start at 40L capacity and go up to almost 200L.

All models use reliable, whisper-quiet Danfoss compressors which feature low power consumption and low-voltage sensing to avoid accidental discharge of the vehicle's batteries.

### Indel B "CRUISE" fridges feature:



- Extremely quiet compressor operation
- Low power consumption
- 12V/24V operation. For 230V use, adaptor C9102 (page 33) is recommended
- Adjustable thermostatic control
- Grey doors (other finishes are available to special order)
- 2-year warranty

#### Product Notes:

\* C2940, C2941 & C2942 have externally mounted compressors which can be moved up to 15M away from their boxes. C2940 & C2942 have their compressors mounted at the back. C2941 has its compressor at the bottom. Dimensions given do not include the compressor.

\*\* C2943 & C2950 come with an installation frame.

\*\*\* C2946 & C2950 have separate freezer compartments with their own doors.

\*Power draw rating is based on the average hourly power consumption with an ambient temperature of 32°C/89°F & interior temperature of 5°C/41°F.

Most models are also available with cold accumulators which will maintain temperature for up to 10 hours even when there is no power to the fridge. Please phone or check our website for prices.

For full specifications and other information on Indel B Cruise fridges, visit our website.

CODE	DESCRIPTION	CAPACITY	TEMP. RANGE	POWER DRAW	DIMENSIONS (mm)	WEIGHT	PRICE
C2940	CRUISE 40 FRIDGE	40 Litres	+10°C to -10°C	13 watts	400 W x 400 D x 420 H	16 Kgs	£439.00
C2941	CRUISE 41 FRIDGE	41 Litres	+10°C to -10°C	14 watts	500 W x 340 D x 465 H	19 Kgs	£485.00
C2942	CRUISE 42 FRIDGE	42 Litres	+10°C to -2°C	14 watts	380 W x 360 D x 520 H	16 Kgs	£459.00
C2943	CRUISE 49 FRIDGE	49 Litres	+10°C to -2°C	13 watts	380 W x 520 D x 520 H	19 Kgs	£469.00
C2944	CRUISE 65 FRIDGE	65 Litres	+10°C to -2°C	15 watts	450 W x 550 D x 530 H	18 Kgs	£495.00
C2945	CRUISE 75 FRIDGE	75 Litres	+10°C to -2°C	19 watts	470 W x 555 D x 620 H	20 Kgs	£499.00
C2946	CRUISE 120 FRIDGE	120L + 20L	+10°C to -2°C	19 watts	475 W x 460 D x 850 H	30 Kgs	£649.00
C2947	CRUISE 160 FRIDGE	106 Litres	+10°C to -2°C	19 watts	485 W x 500 D x 745 H	22 Kgs	£510.00
C2948	CRUISE 130 FRIDGE	130 Litres	+10°C to -2°C	19 watts	525 W x 550 D x 750 H	24 Kgs	£545.00
C2949	CRUISE 130 FREEZER	90 Litres	-6°C	20 watts	525 W x 550 D x 790 H	24 Kgs	£579.00
C2950	CRUISE 195 FRIDGE	130 L + 60 L	+10°C to -2°C	33 watts	555 W x 585 D x 1350 H	38 Kgs	£999.00

## DC AIRCO RANGE OF 12V/24V AIR CONDITIONING

On hot summer nights, keeping cool can be a real problem. DC Airco models are the only true 12V/24V air-conditioners available and can be used even when the vehicle's engine is off. This makes them ideal for commercial vehicles, mobile exhibition units and libraries, horseboxes and even motorcaravans when main power is not available. Unlike evaporative coolers, these units work efficiently in any climate and are not dependent on ambient temperature or a constant supply of water.

Their low power consumption is achieved with the use of highly specialised motors and compressors giving high levels of performance and reliability. They are remarkably quiet in operation, use as little as 6.25 Amps per hour (with a 50% cut, cycle) and are straightforward to fit. DC Airco air-conditioners can also be used on the move.

### DC AIRCO 4400RM 12V AIR CONDITIONER

Cooling output: 4400 BTU/h, 1300 watts  
Power consumption: 300 watts ~ 25 Amps  
Hourly night-time consumption (50% duty cycle): 150 watts - 12.5 Amps  
Weight: 79.4 lbs, 36 Kgs  
Dimensions: 36.2" L x 27.5" W x 10.4" H 920mm L x 700mm W x 365mm H



**C6201**  
**£2100.00**

### DC AIRCO 4400RM 24V AIR CONDITIONER

Cooling output: 4760 BTU/h, 1400 watts  
Power consumption: 300 watts - 12.5 Amps  
Hourly night-time consumption (50% duty cycle): 150 watts - 6.25 Amps  
Weight: 79.4 lbs, 36 Kgs  
Dimensions: 36.2" L x 27.5" W x 10.4" H 920mm L x 700mm W x 365mm H



**C6202**  
**£2100.00**

### DC AIRCO 9000RM 12V AIR CONDITIONER

Cooling output: 9000 BTU/h, 2650 watts  
Power consumption: 470 watts - 39 Amps  
Hourly night-time consumption (50% duty cycle): 235 watts - 19.5 Amps  
Weight: 88.2 lbs, 40 Kgs  
Dimensions: 39.3" L x 30" W x 13.5" H 997mm L x 760mm W x 344mm H



**C6203**  
**£2650.00**

### DC AIRCO 9000RM 24V AIR CONDITIONER

Cooling output: 10,000 BTU/h, 3000 watts  
Power consumption: 470 watts - 19.5 Amps  
Hourly night-time consumption (50% duty cycle) 235 watts, 9.75 Amps  
Weight: 88.2 lbs, 40 Kgs  
Dimensions: 39.3" L x 30" W x 13.5" H 997mm L x 760mm W x 344mm H



**Bm**  
**£250.00**

### SMALL ROOFHATCH MOUNTING PLATE FOR DC AIRCO UNITS

For mounting any DC Airco unit into roof hatches from 450mm x 400mm to 582mm x 450mm.  
DC9000 models can be used with this kit by enlarging the hole from 36cm x 36cm to 40cm x 40cm

### LARGE ROOFHATCH MOUNTING PLATE FOR DC AIRCO UNITS

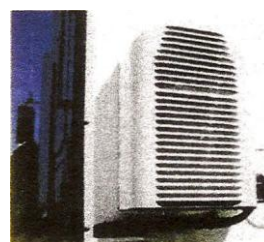
For mounting any DC Airco unit into roof hatches from 450mm x 400mm to 766mm x 540mm.  
DC9000 models can be used with this kit by enlarging the hole from 36cm x 36cm to 40cm x 40cm

**C6206**  
**£290.00**

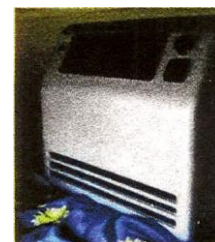
### DC AIRCO 8500 24V AIR CONDITIONER

The most powerful DC Airco unit can be fitted to most trucks and many other vehicles for which a roof-mounted model is not suitable. Only one hole needs to be made to take the pipe linking the 2 parts of the unit so installation is straightforward in most cases. This model is powerful enough to cool the entire cab of a truck and so can be used instead of the engine-run air-con, resulting in big savings in fuel costs.

Cooling output: 9370 BTU/h, 2750 watts  
Power consumption: 490 watts - 20 Amps  
Hourly night-time consumption (50% duty cycle): 245 watts, 10 Amps  
Weight: Exterior unit - 931bs, 42 Kgs Interior unit - 311bs, 14 Kgs  
Dim'n's: Exterior unit - 850mm H x 600mm W x 230mm D Interior unit - 575mm H x 670mm W x 150mm D



Exterior unit  
on back of cab



Interior unit  
in bunk area

**m**  
**tmIIJ**





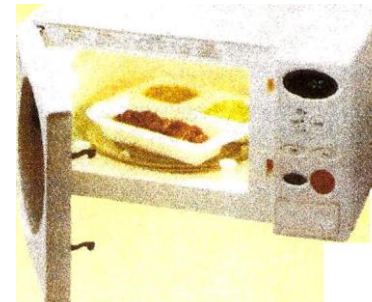
-Hers's a full-size microwave oven which has been specially designed to run efficiently directly from a DC power supply, It has an electronic timer. pre-set cooking times and a digital display,

- Input power: 750 watts (12V), 950 watts (24V)
- Microwave power output: 450 watts (12V), 500 watts (24V)
- 20L capacity
- Dimensions: 530mm W x 283mm H x 362mm D
- Weight: 15 Kg

## 12V/24V MICROWAVE OVEN

### ROADMATE MICROWAVE OVEN

- Power consumption: approx. 65A (12V), 40A (24V)  
Cable is not supplied with this item,  
See our website or phone for mto.



12V

24V



# John Lewis

@ 08456 049 049

## John Lewis JLUCFZW6002 Frost Free Freezer, White

### Product Information

The 4-star John Lewis JLUCFZW6002 under-the-counter freezer has an 'A' rating for energy and can safely freeze and then store food for up to 12 months. Conveniently, you do not have to defrost, so the food retains more nutritional value and colour, and saves you time.

There is a 'quick-freeze' setting with automatic return that reduces the freezer temperature for a fixed time. This ensures that freshly added food is frozen quickly to preserve its quality, while the food already stored remains better protected.

The 4 transparent drawers are also removable for easy loading and unloading. The door may be hinged right or left to suit your kitchen layout. The JLUCFZW6002 meets the latest environmental standards and is CFC and HFC free. With audio/visual temperature alert for extra peace of mind.

Matches the John Lewis JLUCFV6003 under-counter larger fridge to create a uniform look in your kitchen.

Carrying the John Lewis name, our range of machines are both economical, well built and well designed. Manufactured with reliable German technology they are developed with the latest engineering and electronic systems. And, to preserve your confidence in the value, quality and reliability of our appliances, each comes with a free 3 year guarantee.

### Key Features

Average annual energy consumption	£21
Brand	John Lewis
Dimensions	H85 x W59.5 x D63.5cm
Energy consumption	208kWh/year
Energy rating	A
Fast freeze	Yes
Finish	White
Freezing capacity (24 hours)	9kg
Frost free	Yes
Gross volume	100l
Guarantee	FREE 3 year guarantee, extend to 5 years £70
Model name	JLUCFZW6002
Net storage (freezer)	50L
Power cut safe time	13 hours
Reversible door	Yes
Star rating of freezer compartment	4 transparent drawers
Temperature display	4 star
Temperature warning light	Yes
Check Disposal Availability	Yes

For £9 we can dispose of your old appliance when we deliver your new one (subject to availability).

To check whether you can take advantage of our disposal service, please enter your delivery address postcode. View our disposal terms and conditions.

Enter your postcode

[Check availability](#)

Free standard delivery with this product.

To order With Express, 1, 2 working day delivery! click here

## ~CCL Components Ltd

Unit 22, 70 Queen Elizabeth Avenue, Hillington Park  
Glasgow, G52 4NQ United Kingdom  
Local Call Tel: 08450920104 Fax: 08450920108  
Int'l Tel: +44141 8920333 Int'l Fax: +44 141 8809005  
Email: [sales@cclcomponents.com](mailto:sales@cclcomponents.com) VAT Reg No: 7036801 56

**Date: 23 April 2009**

### Customer Address

**Moshe Kinn**

**CCI Quote Ref. 3303**

Customer Reference: Grid-Tied

Name: Moshe Kinn

Phone:

email: [mkinn@freeuk.com](mailto:mkinn@freeuk.com)

Dear Moshe

Further to our discussion recently, I have pleasure in confirming our quotation for your attention.

PART NO	DESCRIPTION
S170-SP-4	Schuco 170Wp SP-4 Solar Module
SB-2500	Sunny Boy SB-2500, 2500W String Inverter
Carriage	Supplied at cost (Dependant on Quantity & Destination)

LEAD TIME	QT Y	UNIT PRICE	LINE PRICE
2 Weeks	12	£565.00	£6,780.00
2 Weeks		£1,454.00	£1,454.00

Prices are given exclusive of VAT (UK) and are valid for 30 days from today's date. All quotations and purchase orders accepted are subject to CCI Compnents Ltd thePowerStore.co.uk terms and conditions. Terms of trade is to be agreed. Incoterms 2000 apply.

I hope that this quotation meets your expectations. If you have any questions, please do not hesitate to give me a call.

Regards,

**Chris Watt**